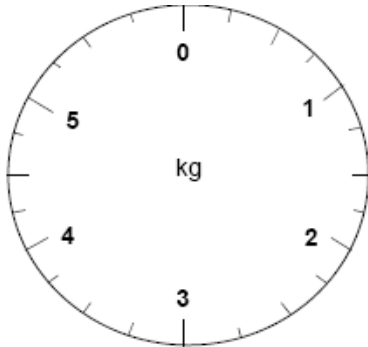
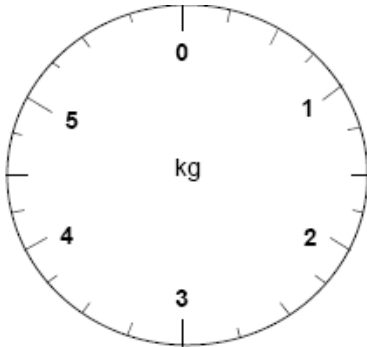


LO: To read weighing scales.	SC: Use scales to weigh. Use weights.
---------------------------------	--

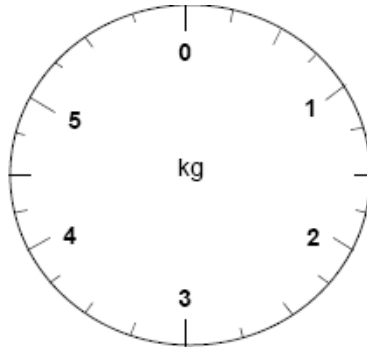
Draw the pointer on the scale to show the weight below.



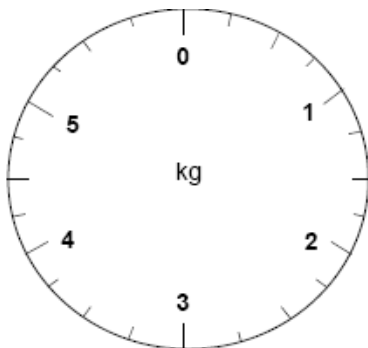
2kg



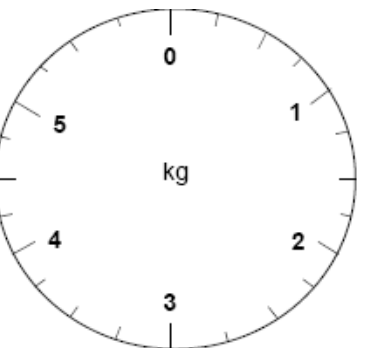
5kg



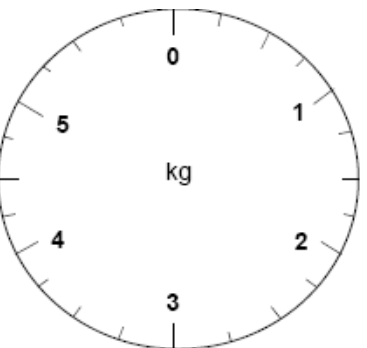
1kg



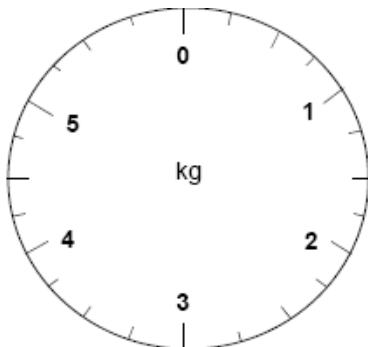
4kg



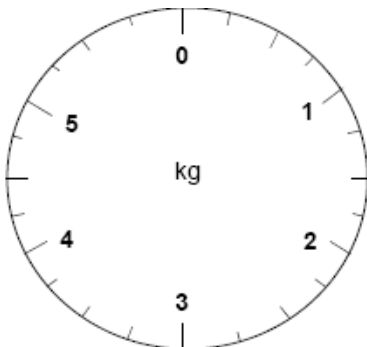
0kg



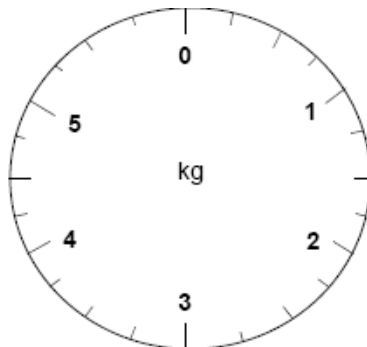
3kg



$2\frac{1}{2}$  kg



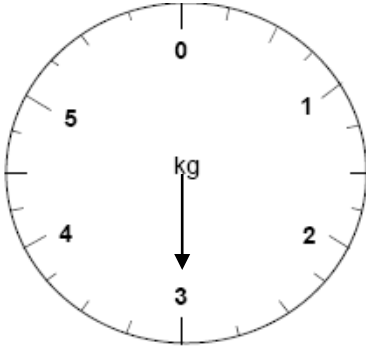
$3\frac{1}{2}$ kg



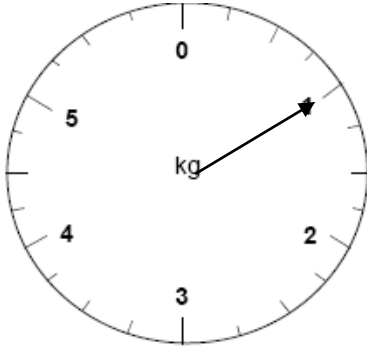
$4\frac{1}{2}$ kg

LO: To read weighing scales.	SC: Use scales to weigh. Use weights.
---------------------------------	--

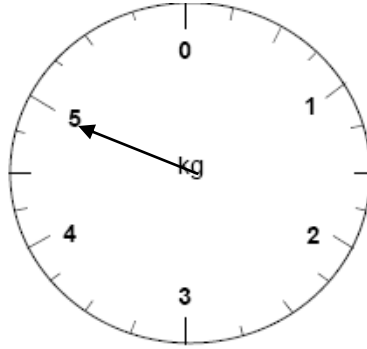
Write the weights under the scales.



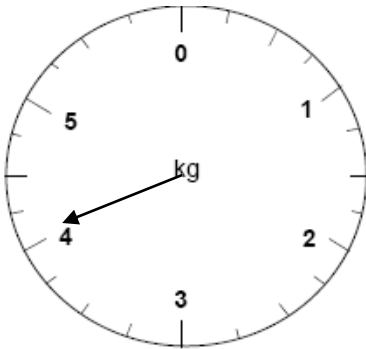
\_\_\_\_\_ kg



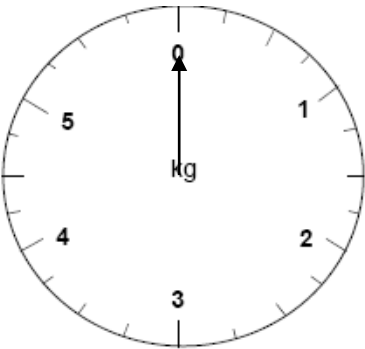
\_\_\_\_\_ kg



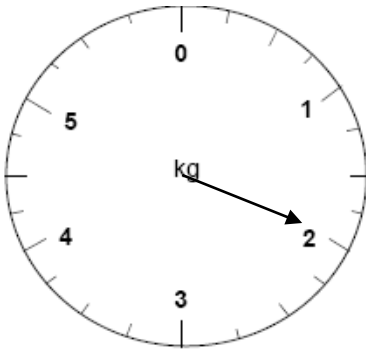
\_\_\_\_\_ kg



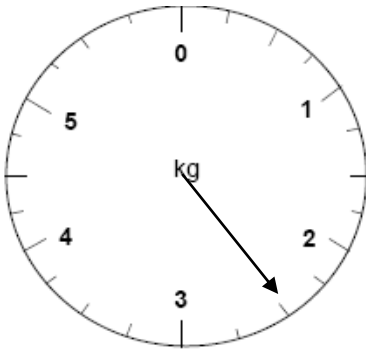
\_\_\_\_\_ kg



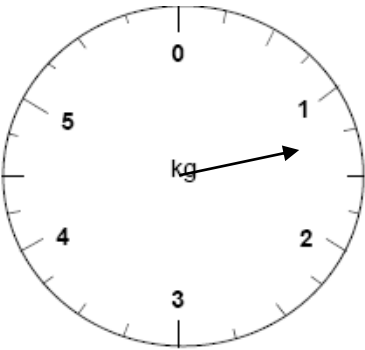
\_\_\_\_\_ kg



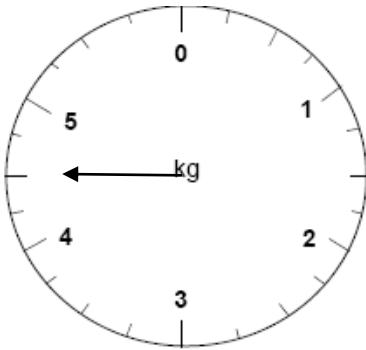
\_\_\_\_\_ kg



\_\_\_\_\_ kg



\_\_\_\_\_ kg



\_\_\_\_\_ kg